



SPLIT TYPE  
ROOM AIR CONDITIONER  
WALL MOUNTED TYPE

# SERVICE MANUAL

Indoor unit	Outdoor unit
ASGA18AHT	AOGR18AHT
ASGA24AHT	AOGR24AHT

## CONTENTS

SPECIFICATIONS . . . . .	1
DIMENSIONS . . . . .	2
REFRIGERANT SYSTEM DIAGRAM . . .	3
CIRCUIT DIAGRAM . . . . .	4
INDOOR PCB CIRCUIT DIAGRAM . . . .	5
ERROR DETECTION . . . . .	8
PARTS (INDOOR UNIT) . . . . .	9
PARTS (OUTDOOR UNIT) . . . . .	14
ACCESSORIES . . . . .	16

# SPECIFICATIONS

## ELECTRICAL DATA

TYPE	Cool only	Cool only
INDOOR UNIT	ASGA18AHT	ASGA24AHT
OUTDOOR UNIT	AOGR18AHT	AOGR24AHT
POWER SOURCE	220 - 240 V	220 - 240 V
FREQUENCY	50 Hz	50 Hz
COOLING CAPACITY	5,400 - 5,400 W	6,900 - 6,900 W
INPUT WATTS	2,140 - 2,170 W	2,650 - 2,720 W
RUNNING CURRENT	10.0 - 9.7 A	13.0 - 13.0 A
E.E.R.	2.52 - 2.49 W/W	2.60 - 2.54 W/W
MOISTURE REMOVAL	2.0 L/hr	2.5 L/hr
AIR CIRCULATION POWERFUL	1,150 m <sup>3</sup> /hr	1,280 m <sup>3</sup> /hr
MAXIMUM CURRENT	15.0 A	19.0 A

## FAN MOTOR

POWER SOURCE		220 - 240 V	
INDOOR UNIT	Discrimination	MFD-50ROTN	
	Powerful	1,420 r.p.m.	1,550 r.p.m.
	High	1,280 r.p.m.	1,420 r.p.m.
	Medium	1,120 r.p.m.	1,220 r.p.m.
	Low	1,020 r.p.m.	1,020 r.p.m.
	Quiet	900 r.p.m.	900 r.p.m.
OUTDOOR UNIT	Discrimination	MFB-247FBT	
	High	730 - 760 r.p.m.	

## NOISE LEVEL

INDOOR UNIT	High	44 dB	47 dB
	Medium	40 dB	44 dB
	Low	38 dB	38 dB
	Quiet	35 dB	35 dB
OUTDOOR UNIT		55 - 56 dB	55 - 56 dB

## COMPRESSOR AND REFRIGERANT

TYPE	Hermetic type, 2 poles, Single phase, Induction motor, (PSC) Recipro		
DISCRIMINATION	AW5524EK-SF	AW5532EK-SF	
WEIGHT (with oil)	27.20 kg	29.78 kg	
PRECHARGED REFRIGERANT	1,050 g	1,600 g	
REFRIGERANT TYPE	R-22		
FULL CHARGE	Pipe length 7.5 m	1,050 g	1,600 g
	10 m	1,100 g	1,650 g
	20 m	1,300 g	1,850 g
ADDITIONAL CHARGE	20 g/m		20 g/m
MAXIMUM HEIGHT DIFFERENCE	8 m		8 m

## DIMENSIONS

INDOOR UNIT	H x W x D	320 x 998 x 238 mm
OUTDOOR UNIT	H x W x D	643 x 840 x 336 mm

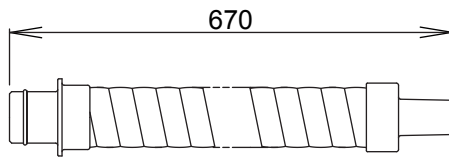
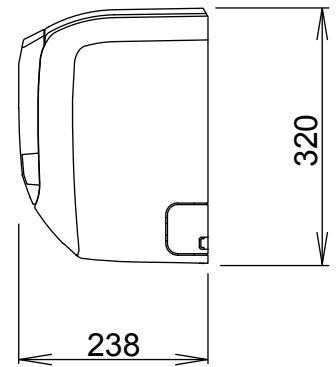
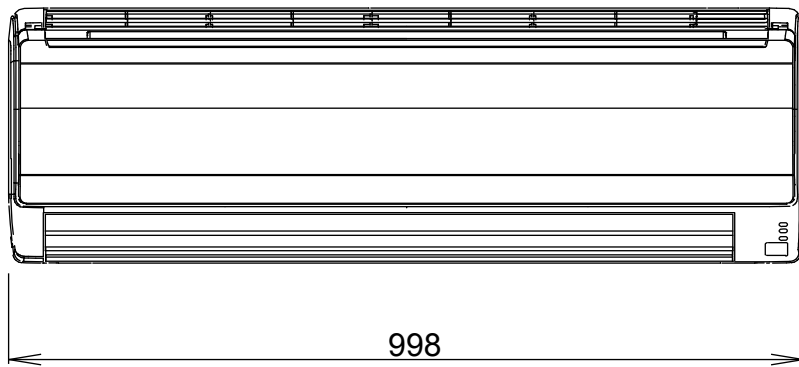
## WEIGHT

INDOOR UNIT	Shipping / Net	17 kg / 13 kg	
OUTDOOR UNIT	Shipping / Net	62 kg / 57 kg	68 kg / 62 kg

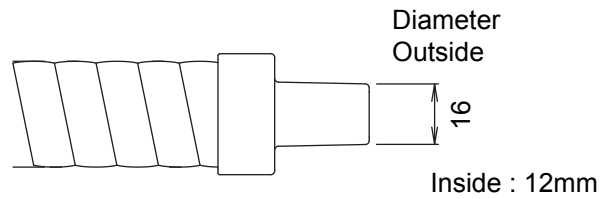
# DIMENSIONS

(unit : mm)

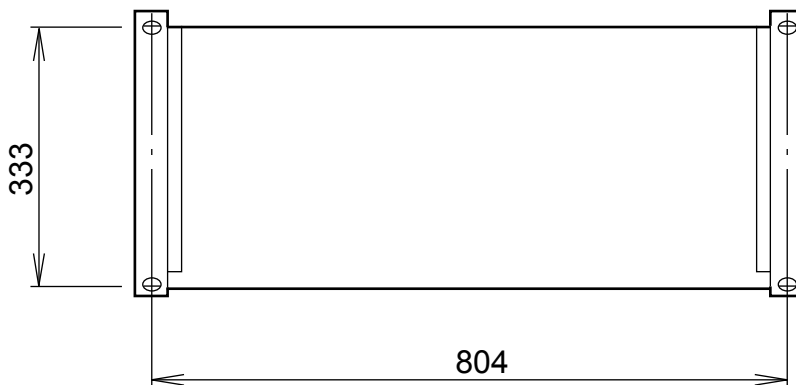
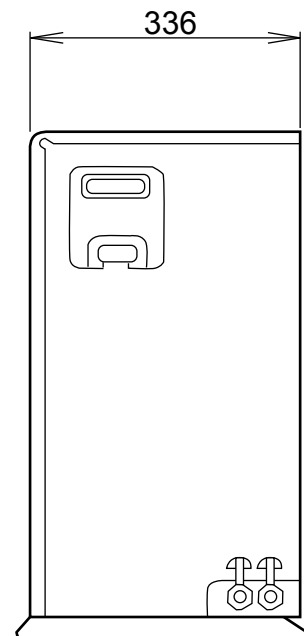
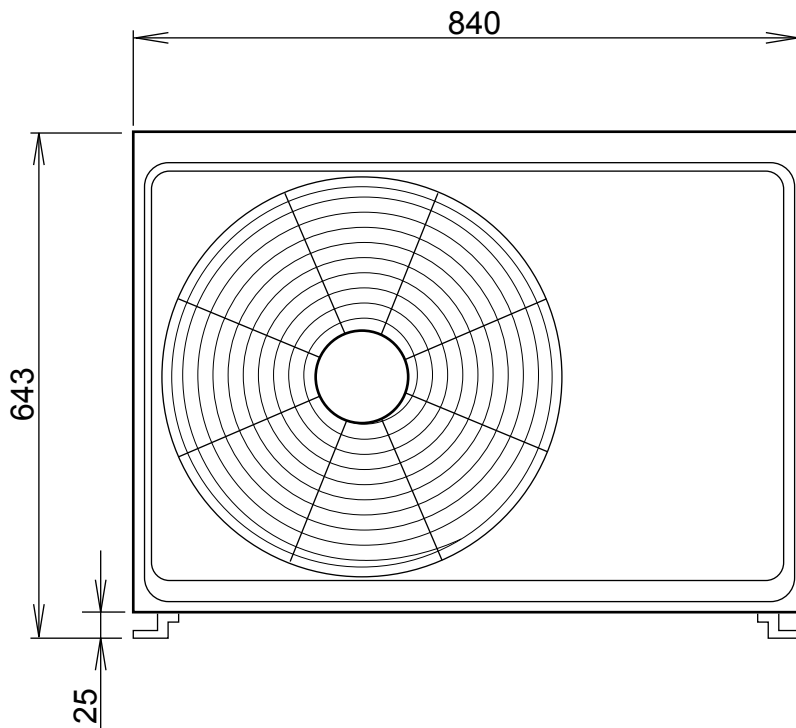
## INDOOR UNIT



Drain hose

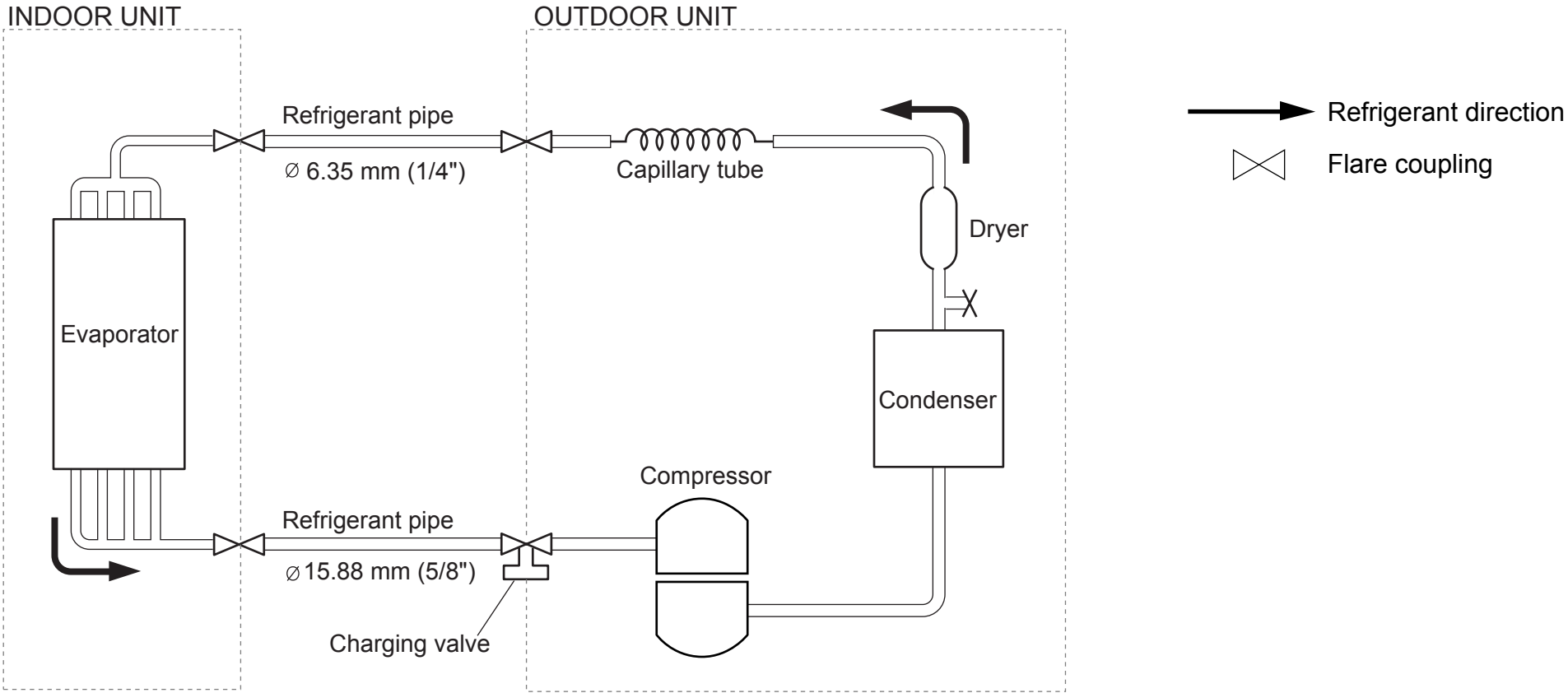


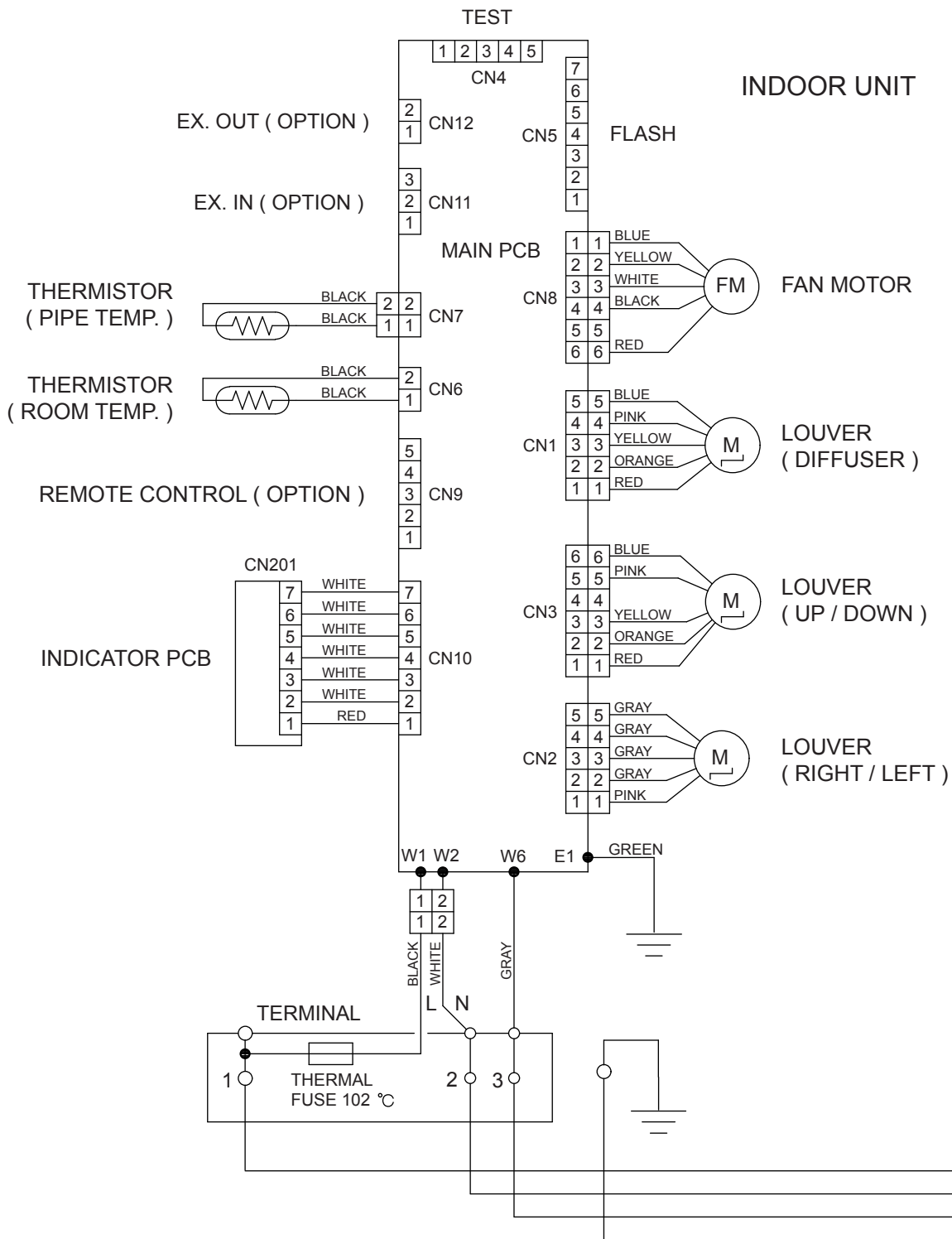
## OUTDOOR UNIT



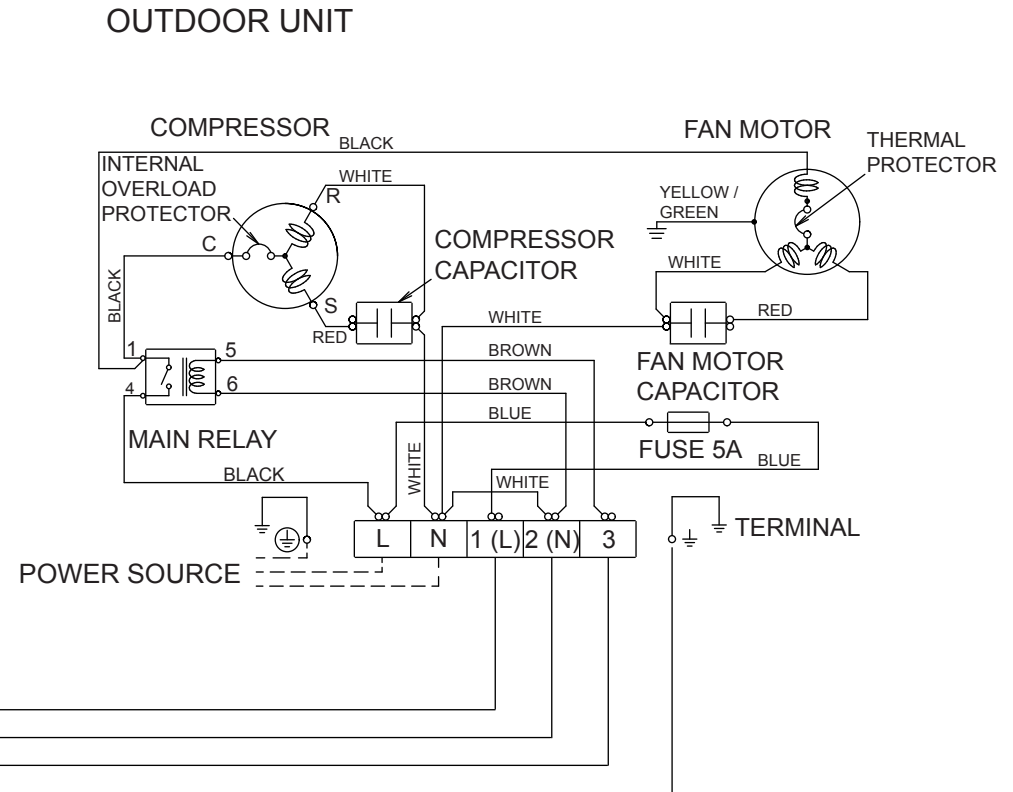
Refrigerant pipe length : 5,000 mm  
Liquid pipe diameter : 6.35 mm  
Gas pipe diameter : 15.88 mm

# REFRIGERANT SYSTEM DIAGRAM



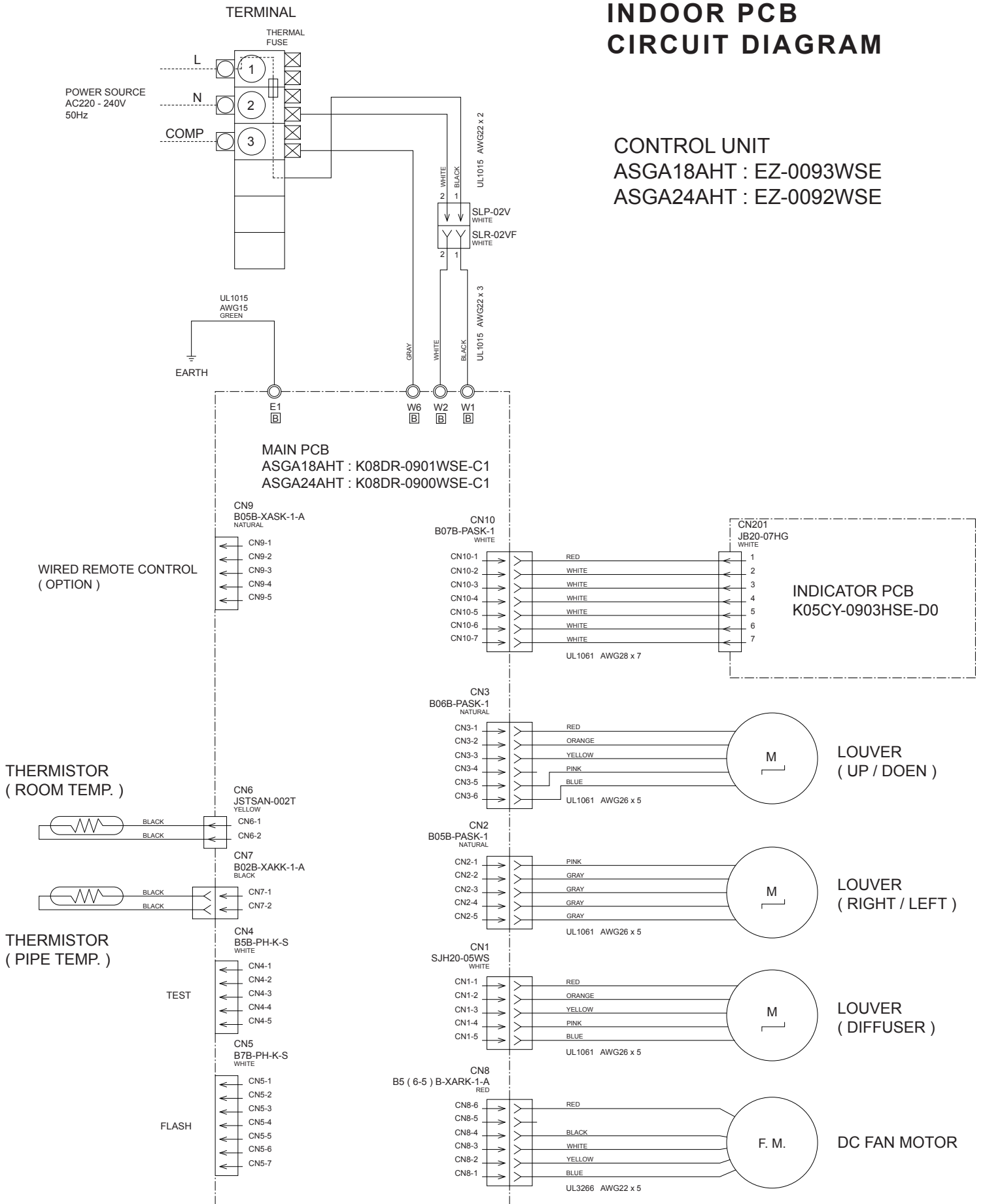


## CIRCUIT DIAGRAM



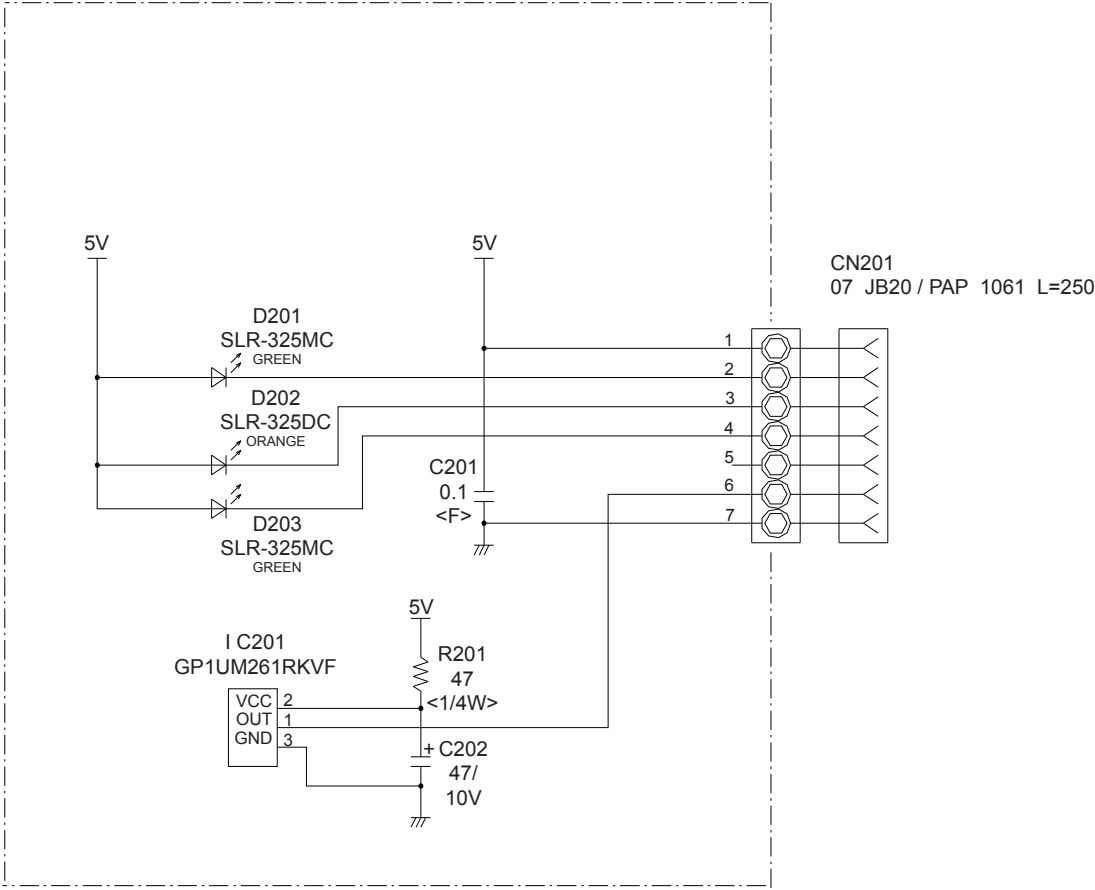
# INDOOR PCB CIRCUIT DIAGRAM

CONTROL UNIT  
 ASGA18AHT : EZ-0093WSE  
 ASGA24AHT : EZ-0092WSE





INDOOR UNIT  
 INDICATOR PCB  
 K05CY-0903HSE-D0



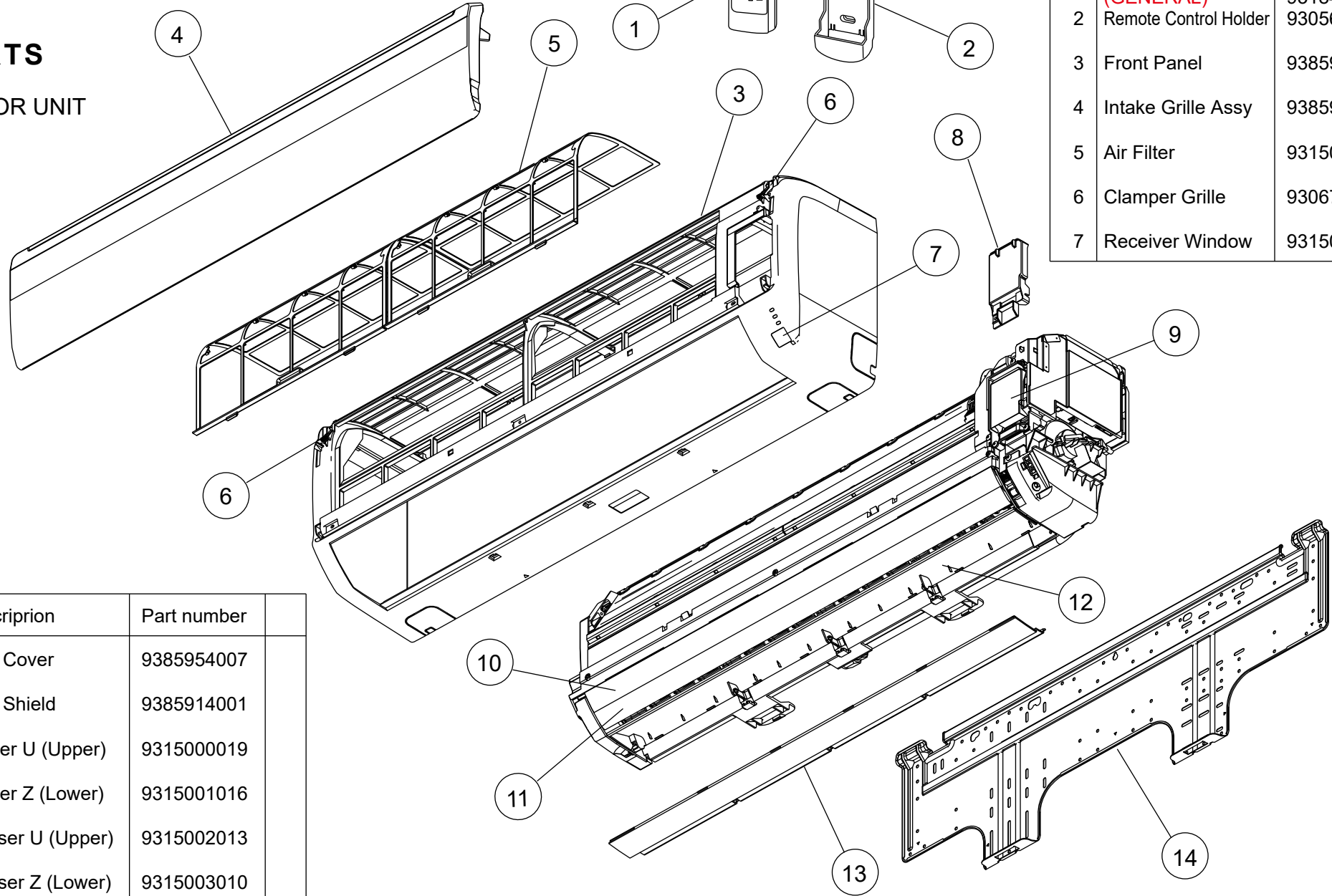
## ERROR DETECTION

LED		Error
Operation	Timer	
Off	8 flash	Wired remote control error (Communication error)
2 flash	2 flash	Indoor temperature thermistor open / short
	3 flash	Indoor unit, heat exchanger middle thermistor open / short
4 flash	2 flash	Forced automatic SW welded (Indoor unit control error)
6 flash	2 flash	Indoor fan motor, abnormal lock
	3 flash	Indoor fan motor, abnormal rotation
0.1 sec on/off	0.1 sec on/off	Model information error

# PARTS

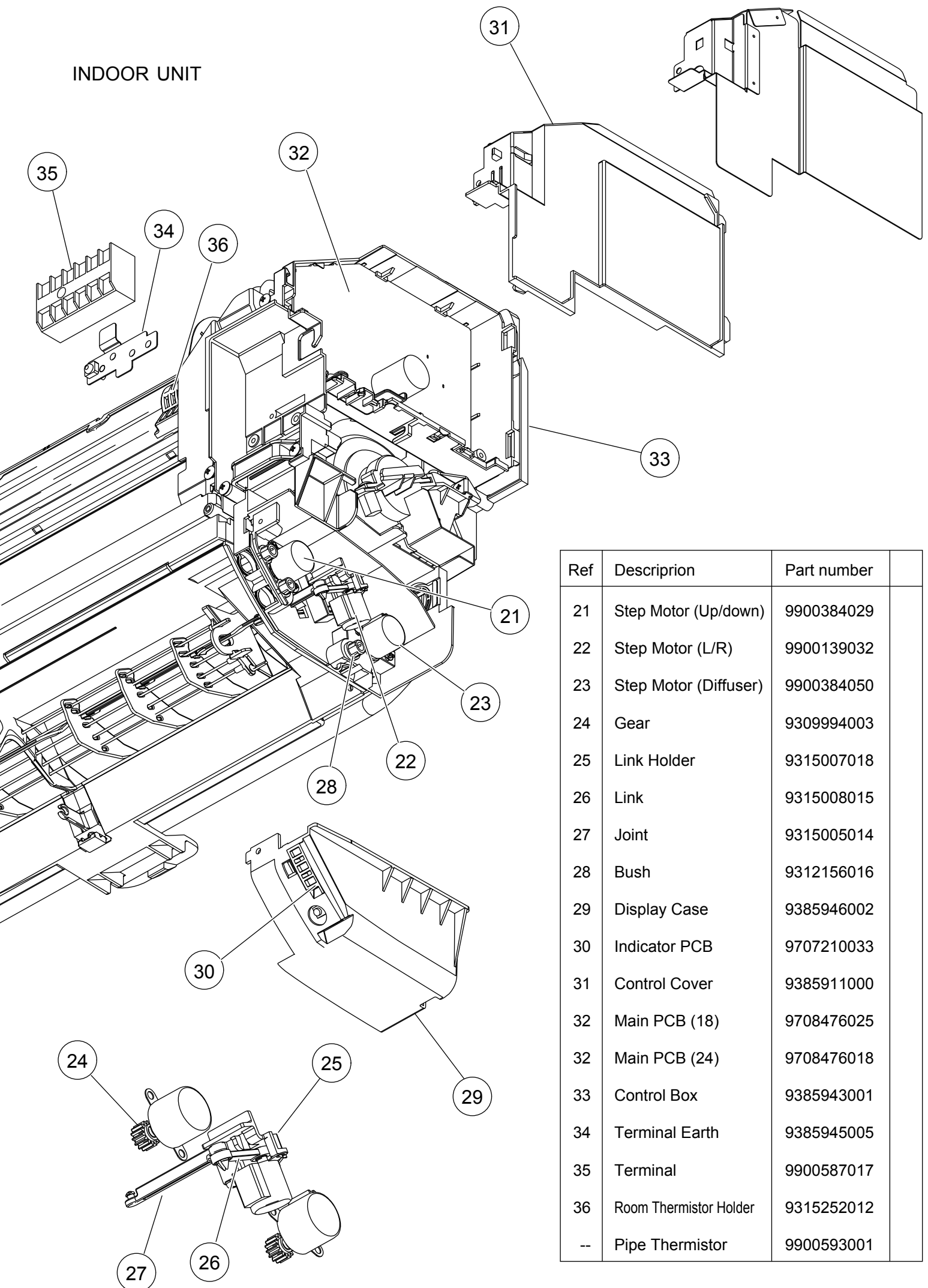
## INDOOR UNIT

Ref	Description	Part number
1	Remote Control <b>(GENERAL)</b>	<b>9315244161</b> <del>9318495003</del>
2	Remote Control Holder	9305642045
3	Front Panel	9385947009
4	Intake Grille Assy	9385985100
5	Air Filter	9315014016
6	Clamper Grille	9306755010
7	Receiver Window	9315010025



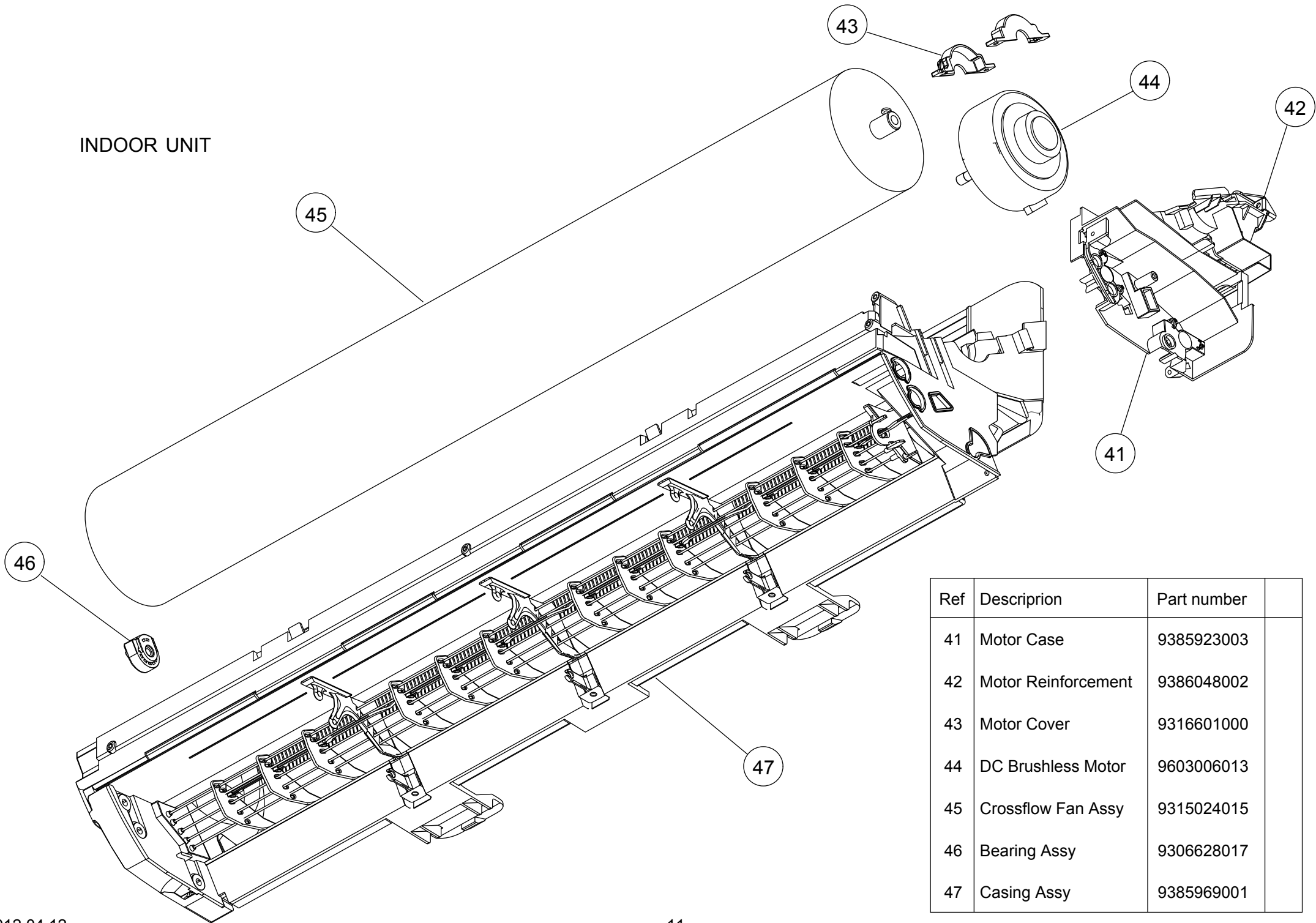
Ref	Description	Part number
8	Wire Cover	9385954007
9	Wire Shield	9385914001
10	Louver U (Upper)	9315000019
11	Louver Z (Lower)	9315001016
12	Diffuser U (Upper)	9315002013
13	Diffuser Z (Lower)	9315003010
14	Bracket Panel	9315023025

# INDOOR UNIT



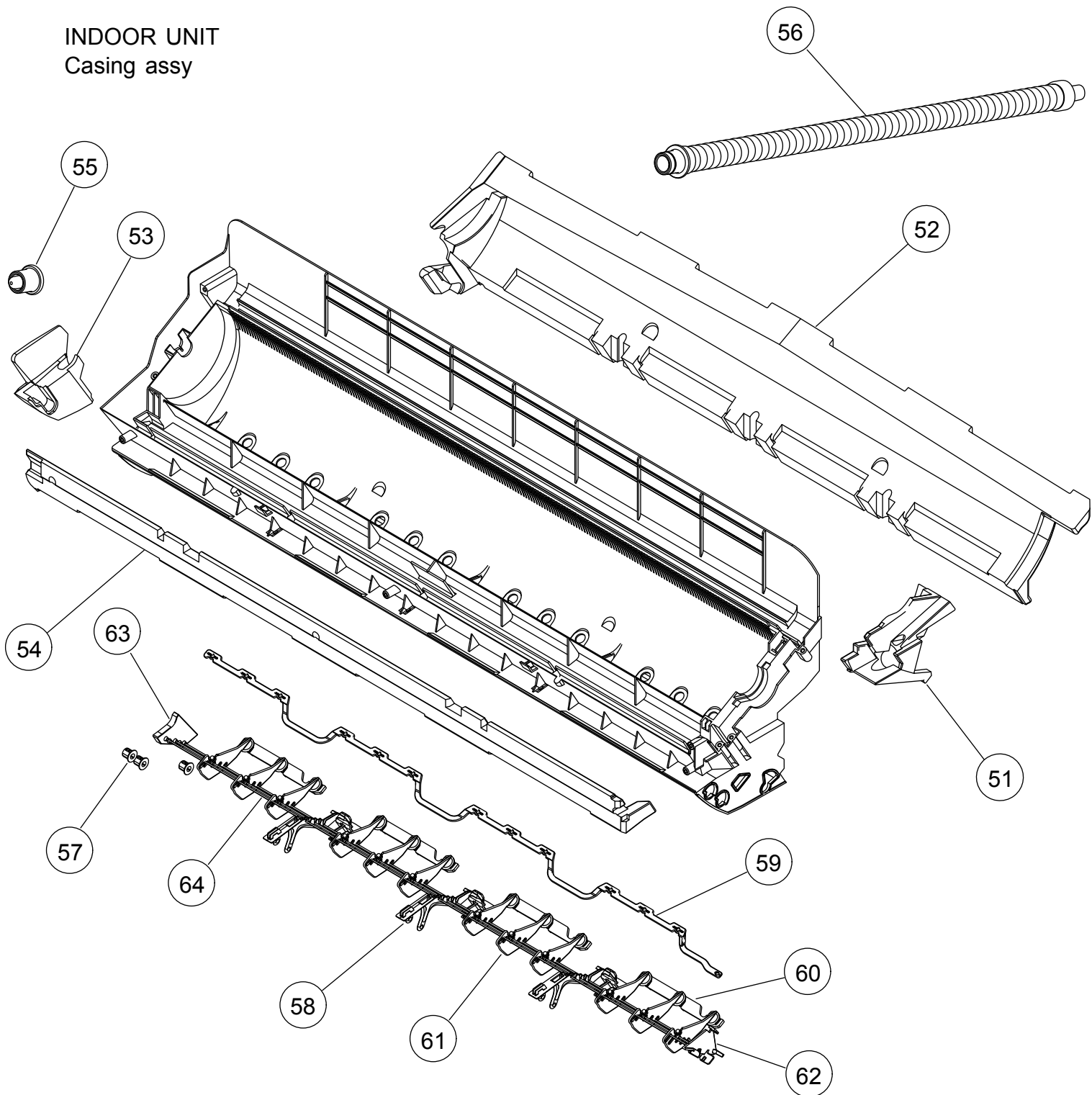
Ref	Description	Part number
21	Step Motor (Up/down)	9900384029
22	Step Motor (L/R)	9900139032
23	Step Motor (Diffuser)	9900384050
24	Gear	9309994003
25	Link Holder	9315007018
26	Link	9315008015
27	Joint	9315005014
28	Bush	9312156016
29	Display Case	9385946002
30	Indicator PCB	9707210033
31	Control Cover	9385911000
32	Main PCB (18)	9708476025
32	Main PCB (24)	9708476018
33	Control Box	9385943001
34	Terminal Earth	9385945005
35	Terminal	9900587017
36	Room Thermistor Holder	9315252012
--	Pipe Thermistor	9900593001

INDOOR UNIT



Ref	Description	Part number
41	Motor Case	9385923003
42	Motor Reinforcement	9386048002
43	Motor Cover	9316601000
44	DC Brushless Motor	9603006013
45	Crossflow Fan Assy	9315024015
46	Bearing Assy	9306628017
47	Casing Assy	9385969001

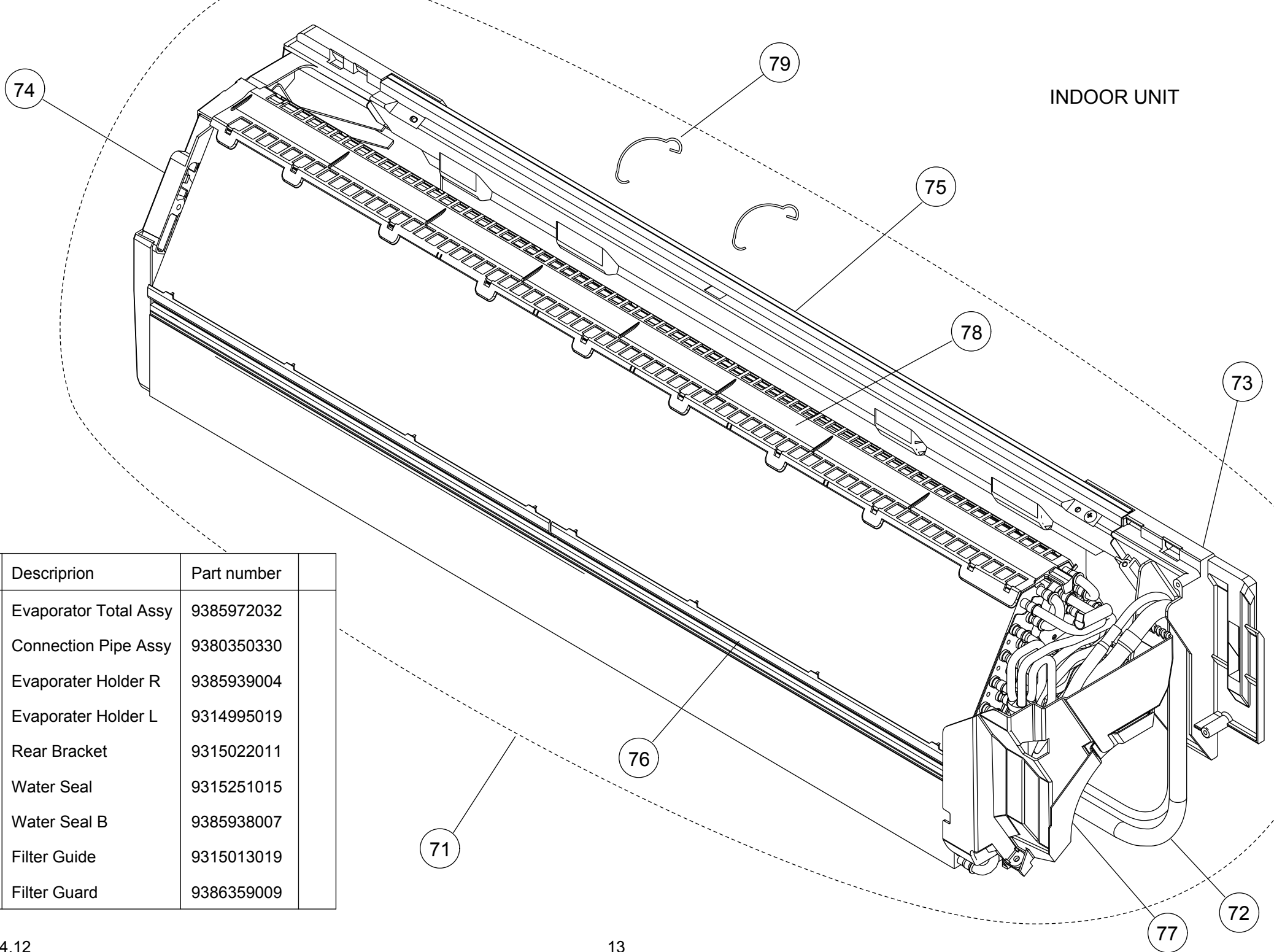
INDOOR UNIT  
Casing assy



Ref	Description	Part number
51	Casing Cover R	9385918009
52	Casing Cover B	9385916005
53	Casing Cover L	9315017017
54	Casing Cover F	9385919006
55	Drain Cap	9316552012
56	Drain Hose Assy	9315769015
57	Bush	9312156016

Ref	Description	Part number
58	Piller	9385996007
59	Joint	9385922006
60	Spacer	9312441013
61	R and L Louver	9385921009
62	Fan Guard Holder R	9385979000
63	Fan Guard Holder L	9385998001
64	Fan Guard	9385908000

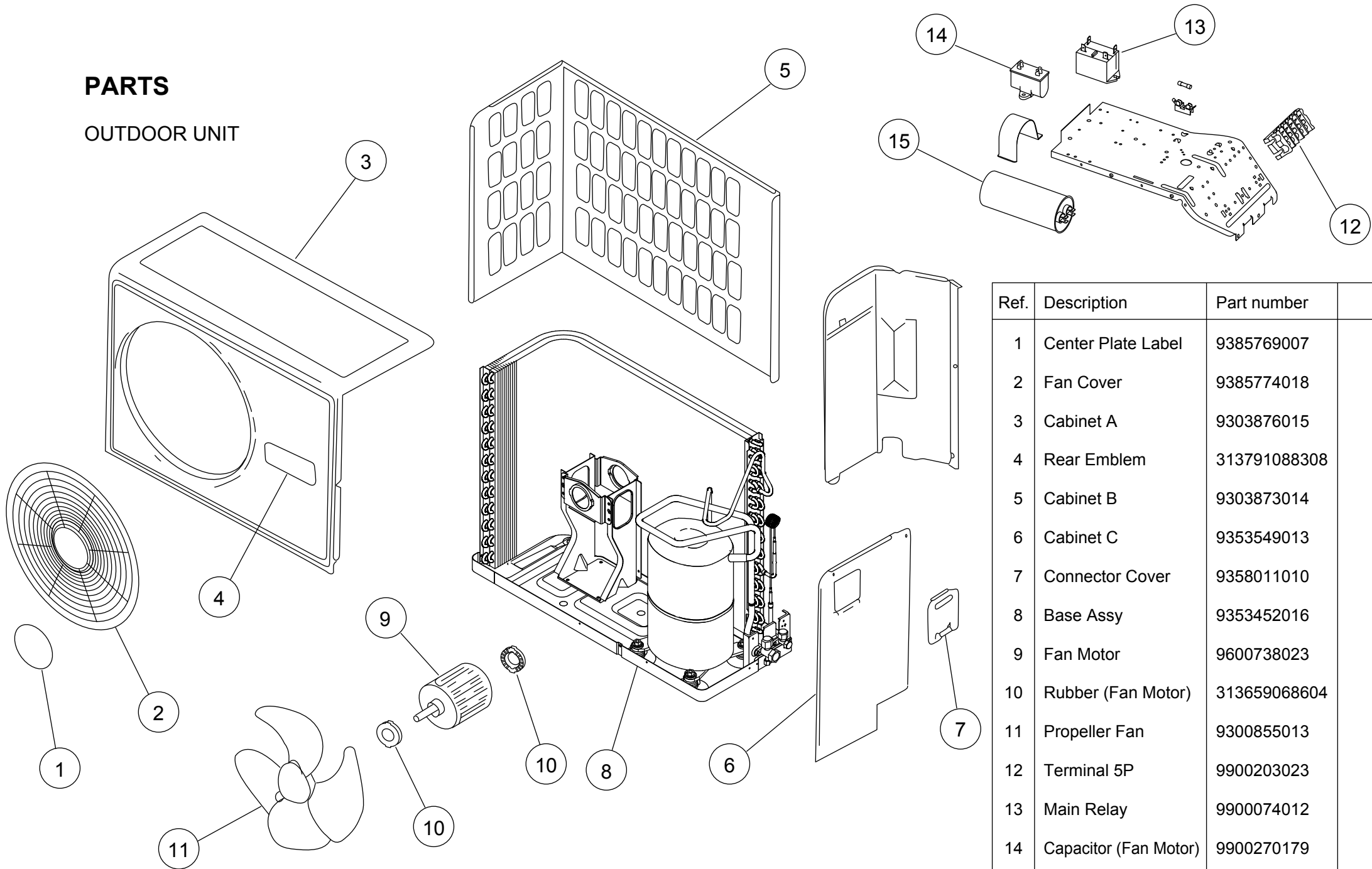
INDOOR UNIT



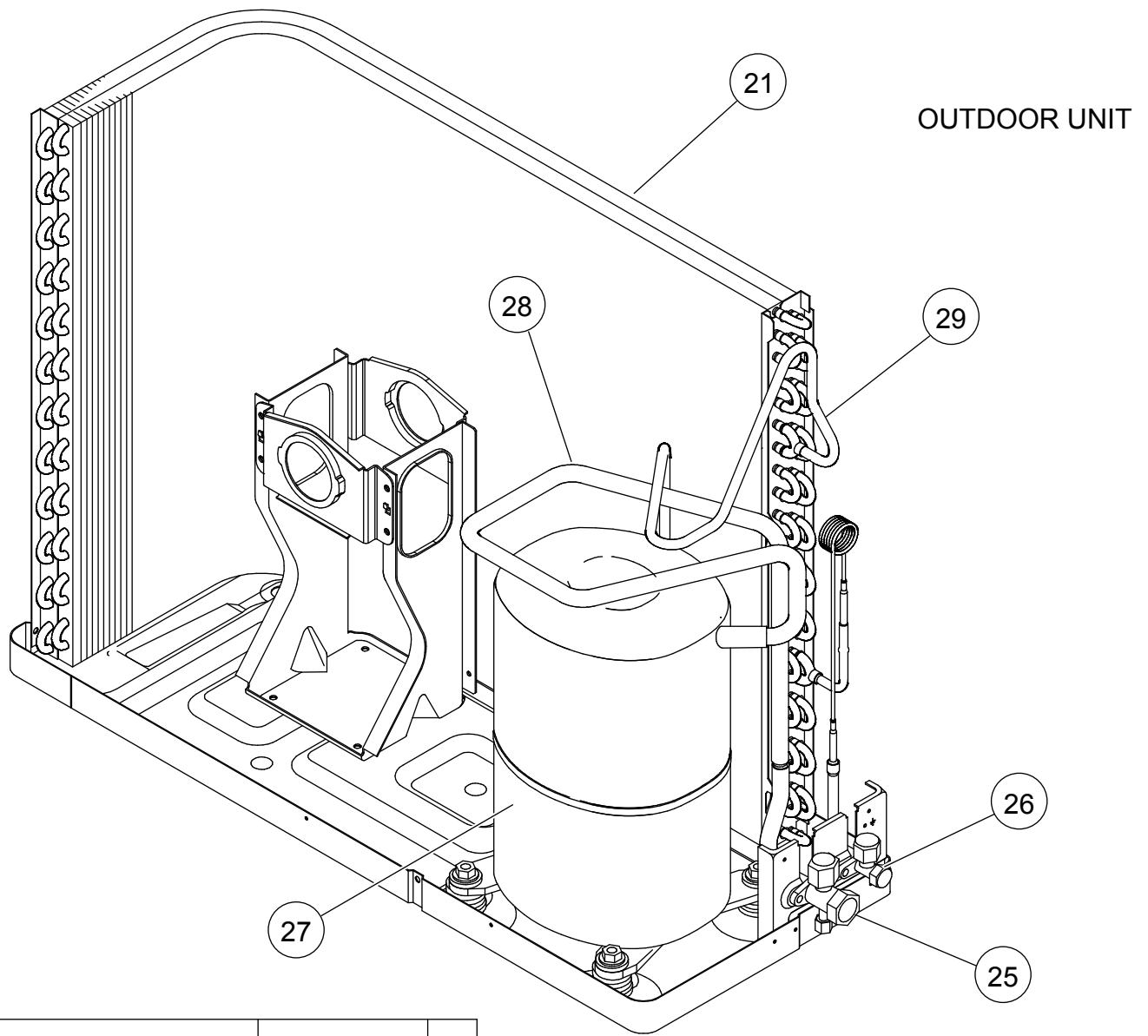
Ref	Description	Part number
71	Evaporator Total Assy	9385972032
72	Connection Pipe Assy	9380350330
73	Evaporater Holder R	9385939004
74	Evaporater Holder L	9314995019
75	Rear Bracket	9315022011
76	Water Seal	9315251015
77	Water Seal B	9385938007
78	Filter Guide	9315013019
79	Filter Guard	9386359009

# PARTS

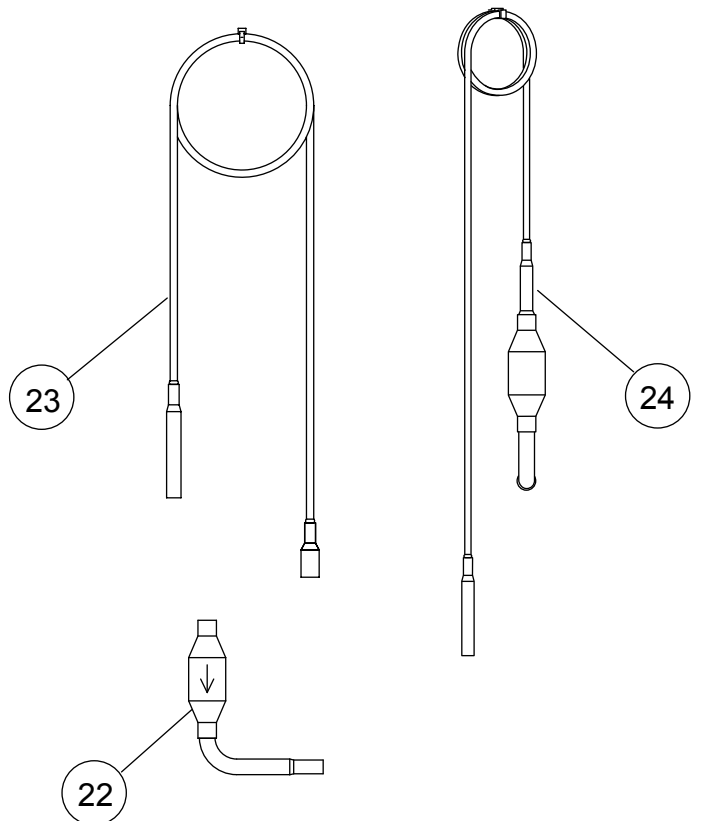
## OUTDOOR UNIT



Ref.	Description	Part number
1	Center Plate Label	9385769007
2	Fan Cover	9385774018
3	Cabinet A	9303876015
4	Rear Emblem	313791088308
5	Cabinet B	9303873014
6	Cabinet C	9353549013
7	Connector Cover	9358011010
8	Base Assy	9353452016
9	Fan Motor	9600738023
10	Rubber (Fan Motor)	313659068604
11	Propeller Fan	9300855013
12	Terminal 5P	9900203023
13	Main Relay	9900074012
14	Capacitor (Fan Motor)	9900270179
15	Running Capacitor (18)	9900269074
15	Running Capacitor (24)	9900269081

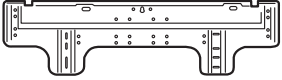



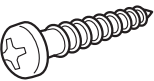
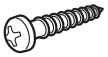

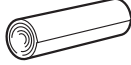


Ref.	Description	Part number
21	Condenser Assy (18)	9385796003
21	Condenser Assy (24)	9385742000
22	Strainer Sub Assy (18)	9353456175
23	Capillary Assy (18)	9386438001
24	Capillary Assy (24)	9386439008
25	3-way Valve Assy (18)	9374851089
25	3-way Valve Assy (24)	9374851034
26	2-way Valve Assy	9374863068
27	Compressor Sub Assy (18)	9353458216
27	Compressor Sub Assy (24)	9353458247
28	Suction Pipe (18)	9385793002
28	Suction Pipe (24)	9371274089
29	Discharge Pipe Assy (18)	9385794009
29	Discharge Pipe Assy (24)	9385889002


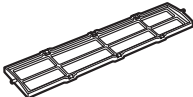
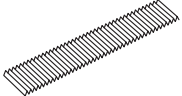
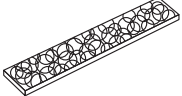


# ACCESSORIES

## INDOOR UNIT

Name and Shape	Q'ty	Use
Wall hook bracket 	1	For indoor unit installation
Remote control 	1	For air conditioner operation
Battery 	2	For remote control
Remote control holder 	1	Use as remote control holder
Tapping screw (large) ( $\varnothing 4 \times 20$ ) 	8	For wall hook bracket installation
Tapping screw (small) ( $\varnothing 3 \times 12$ ) 	2	For remote control holder installation
Insulation (Drain hose) 	1	For installing drain hose
Cloth tape 	1	For finishing of the piping

## OPTIONAL PARTS

Name and Shape	Model No.	Use
 Wired remote control	UTB-*UD	For dual remote control
 Air cleaning filter frame		
 Air cleaning filter	UTR-FA13-1	
 Deodorizing filter	UTR-FA13-2	

1204G4056